



## DIGITAL INDUSTRIES SOFTWARE

# What's new in Opcenter APS 2310

Increasing schedule flexibility with constraint modeling to support off-shift periods

### Benefits

- Extend secondary constraint modeling to support global off-shift period suspension
- Leverage a new modern UI to align with the Siemens Opcenter portfolio
- Use a common licensing system across the Siemens Opcenter portfolio

### Summary

Opcenter™ Advanced Planning and Scheduling (APS) software, which is part of the Siemens Xcelerator business platform of software, hardware and services, is a family of production planning and scheduling products that improve the synchronization of your manufacturing processes. This gives you greater visibility and control, which then enables you to increase resource utilization and on-time delivery while reducing inventory levels and waste. Opcenter APS is a highly customizable capacity planning and scheduling package.

**Features**

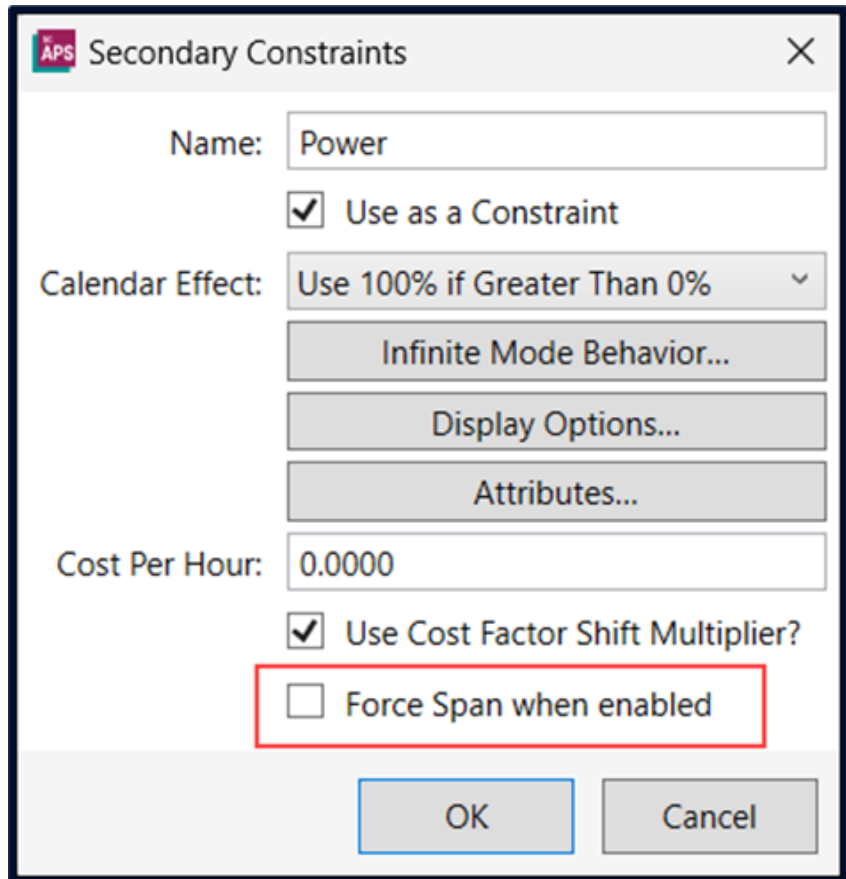
- Improved secondary constraint off-shift spanning flexibility
- New modern user interface (UI)
- Adopted Siemens advanced licensing technology (SALT)
- Teamcenter® Share app branding
- Opcenter APS Anywhere – Viewer to view scheduling statistics
- Manufacturing operations management (MOM) portfolio integration compatibility

**Improved secondary constraint off-shift spanning**

Opcenter Scheduling supports both primary and secondary resource types. You can typically use primary resources for modeling large equipment; alternatively, you can use secondary resources to model tooling or labor.

Due to labor constraints following shift pattern changes, Opcenter Scheduling needs to be able to manage when labor is unavailable. We have achieved this by introducing secondary constraints for off-shift spanning.

You can define off-shift periods within the constraint calendar to allow a job to span across it. When an operation uses multiple scheduled secondary constraints, if one of those constraints contains an off-shift period span, then all constraints inherit that off-shift period.

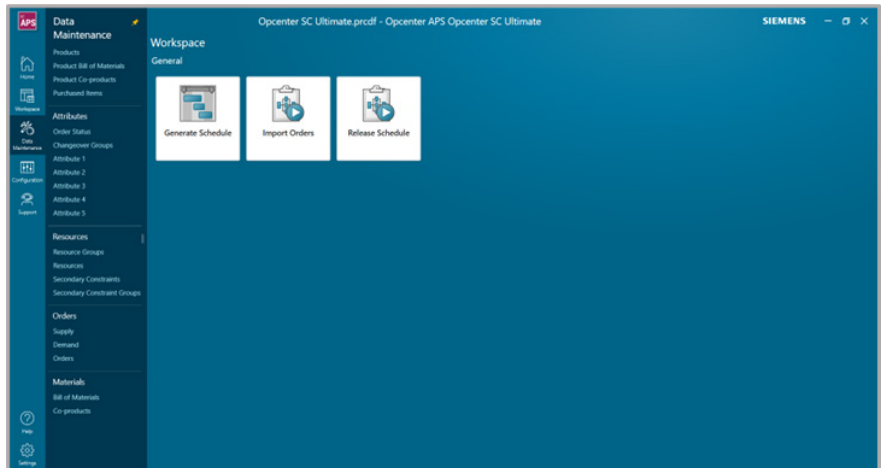


### New modern user interface

Opcenter APS now has a modern UI, adopting the latest Siemens Digital Industries Software guidelines to provide a consistent user experience across the Opcenter portfolio.

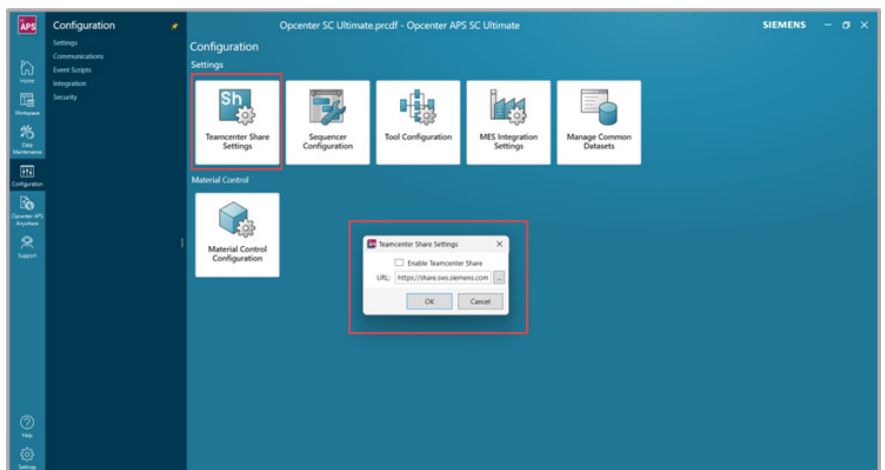
This includes a new menu and navigation system with updated, easier-to-identify icons, supporting existing customer upgrades to the new standard icons.

Additionally, this UI is fully customizable via a menu definition file, providing each solution with a unique menu system to cater to individual needs.



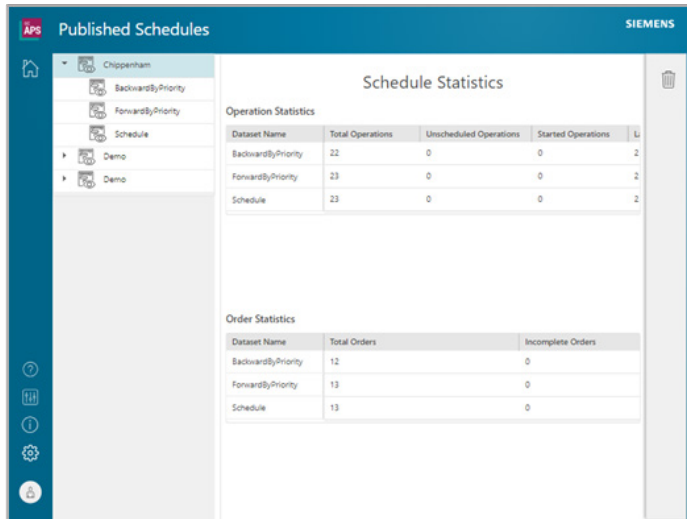
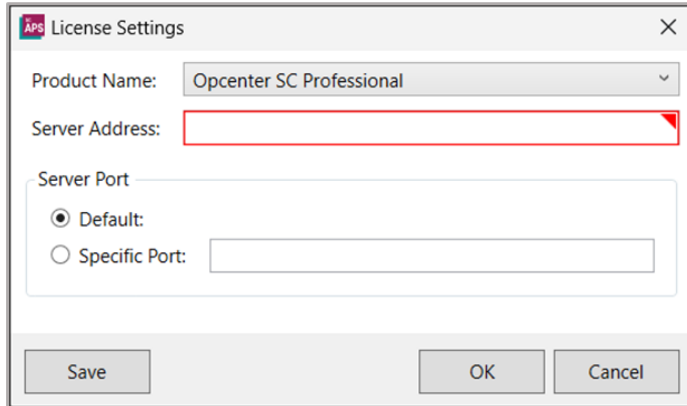
### Teamcenter Share integration

Siemens Xcelerator Share is now called Teamcenter Share, which is also part of the Siemens Xcelerator business portfolio. We have updated Opcenter APS to integrate directly with Teamcenter Share to allow file collaboration across your entire Opcenter portfolio.



**Siemens advanced licensing technology**

We have incorporated Opcenter APS with common license technology used across a wide range of Siemens product offerings. This provides customers with a single license server that hosts all your Siemens licenses in a central location, allowing you to deploy, manage and service your licenses with ease.



**Opcenter APS Anywhere – Viewer for scheduling statistics**

Opcenter APS Anywhere – Viewer is a browser-based companion product to Opcenter Scheduling. This solution allows users to publish and view released schedules via a web browser, anytime, anywhere. Using the Opcenter APS Anywhere – Viewer, you can view scheduling statistics for published schedules across all facilities.

**MOM portfolio integration compatibility**

Opcenter APS supports a range of integrations across the MOM portfolio. This release supports compatibility with Opcenter Execution Discrete 2307, Opcenter Execution Process 2307, Opcenter Scheduling surface-mount technology (SMT) 2310, Opcenter Research, Development and Laboratory (RD&L) and Siemens Digital Logistics AX4.

**Siemens Digital Industries Software**  
[siemens.com/software](https://www.siemens.com/software)

Americas  
 1 800 498 5351

Europe  
 00 800 70002222

Asia-Pacific  
 001 800 03061910

For additional numbers, click [here](#).